



# Monthly Operating Report

May:2021

So. Sangamon  
Water Commission  
June 21st, 2021

# SSWC

9199 Buckhart Rd Rochester IL 62563

# TABLE OF CONTENTS

SECTION	PAGE NO.
Executive Summary.....	ES-1
<b>1. SAFETY .....</b>	<b>1-1</b>
1.1 Safety Training .....	1-1
1.2 Lost time Accidents .....	1-1
1.3 Safety Audit .....	1-1
1.4 Miscellaneous Safety.....	1-1
<b>2. COMPLIANCE, FLOWS AND LOADINGS .....</b>	<b>2-2</b>
2.1 Compliance .....	2-2
2.2 Influent flows and loadings .....	2-2
2.3 Effluent Concentrations .....	2-2
2.4 Lagoon Discharge Concentrations .....	2-4
<b>3. OPERATIONS.....</b>	<b>3-1</b>
3.1 Events impacting operations .....	3-1
3.2 Emergency & Service calls.....	3-1
3.3 Emergency Call-outs .....	3-1
3.4 Customer Inquiries .....	3-1
<b>4. MAINTENANCE AND REPAIR.....</b>	<b>4-4</b>
4.1 Preventative and predictive maintenance.....	4-4
4.2 Corrective repairs .....	4-4
<b>5. PROJECT MANAGEMENT &amp; SUPPORT.....</b>	<b>5-1</b>
5.1 Staffing & Training.....	5-1
5.2 Corporate Support.....	5-2
5.3 Budget.....	5-3
<b>6. CAPITAL PLANNING .....</b>	<b>6-1</b>
6.1 Approved CIP Projects Current status.....	6-1
6.2 Draft Capital Improvement Plan .....	6-1



## LIST OF TABLES

<b>TABLE</b>	<b>PAGE NO.</b>
Table 2.2 Influent Concentrations and Flow.....	2-2
Table 2.3 Finished Water Quality.....	2-2
Table 2.4 Weekly Grab Sample Analysis Results.....	2-4
Table 4.1 Budget Table.....	5-3

## EXECUTIVE SUMMARY

**Safety.** Safety is the number one priority at South Sangamon. We have instituted a monthly safety meeting for operations staff at the plant. There were no lost time accidents in the month of May 2021.

**Compliance.** The finished water quality was within regulatory limits and all reporting and sampling requirements were met for the month. A copy of the Operations Report submitted to the Illinois Environmental Protection Agency is available at [www.sswc.us](http://www.sswc.us).

During the month of May 2021, the plant pumped 48.703 million gallons from the well field and 42.311 million gallons of finished water. This is 1 million gallons more than May of 2020.

The SSWC plant has been placed on Critical Review status. Systems on Critical Review will be evaluated for sufficient capacity before issuance of water main extension permits. The Critical Review is currently under review.

**Operations.** There was 4 emergency call-outs for the month. There were numerous customer inquiry for the month.

**Maintenance and Repair.** For the month of May 2021, there were 31 inspections, 3 preventative and 3 corrective maintenance activity completed.

**Budget.** Passed at April 19<sup>th</sup> 2021 meeting.

### **Capital Planning.**

BOP CPU replacement

Chloramines Project

New Berlin Meter relocation.

Chatham emergency interconnect

# 1. SAFETY

## 1.1 SAFETY TRAINING

At South Sangamon we strive to provide a safe working environment for all employees. This is accomplished with daily safety meetings and open communication.

## 1.2 LOST TIME ACCIDENTS

There were 0 lost time accidents in the month of May 2021.

## 1.3 SAFETY AUDIT

No safety audits to date.

## 1.4 MISCELLANEOUS SAFETY

No notable safety issues

## 2. COMPLIANCE, FLOWS AND LOADINGS

### 2.1 COMPLIANCE

The finished water quality was within regulatory limits and all Bacteriological testing was completed for the month of May. A copy of the Operations Report to the Illinois Environmental Protection Agency (IEPA) is available on the SSWC website.

### 2.2 INFLUENT FLOWS AND LOADINGS

The total gallons pumped from the well field were 48.703 MG. The influent parameters were all within the normal range.

The influent flow and loadings are summarized below in Table 2.2

Table 2.2 Influent Concentrations and Flow								
	pH	Temp	Iron	Manganese	Fluoride	Hardness	Alkalinity	Well Flow Gals (MGD).
<b>Max.</b>	7.9	19.1	2.26	.242	-	390	310	1.914
<b>Min.</b>	7.2	13.7	.57	.154	-	205	285	1.334
<b>Avg.</b>	7.5	15.2	1.13	.208	-	352	295	1.571
<b>Total</b>	-	-	-	-	-	-	-	48.703

### 2.3 EFFLUENT CONCENTRATIONS

The facility filtered 42.311 MG during the month with a daily average of 1.365 MG and a min/max 1.149/ 1.681 MG.

Table 2.3 Finished Water Quality										
	Free CL2	Total CL2	pH	Temp	Iron	Manganese	Fluoride	Hardness	Alkalinity	Phosphate
<b>Max.</b>	2.04	2.11	7.9		0.05	0.161	1.0	200	300	2.50
<b>Min.</b>	1.19	1.49	7.4		0.01	0.002	0.37	80	270	1.57
<b>Avg.</b>	1.64	1.81	7.8		0.02	0.025	0.72	136	284	1.93
<b>MCL</b>	-	-	-	-	1.00	-	4.00	-	-	-
<b>SMCL</b>	-	-	-	-	0.30	0.050	2.00	-	-	-

## Finished Water Flow Comparison for FY 2020 -21

Time Period	2020-2021	2019-2020	2018-2019
June 2020- May 2021	403,344,751	363,233,689	388,046,424
Increase for the same period last year		40.1 MG	- 24.8 MG

FINISHED WATER PUMPING HISTORY						
	20-21	19-20	18-19	17-18	16-17	15-16
June	17,414,377	33,460,303	34,040,000	39,931,402	41,541,321	31,092,539
July	44,237,066	23,742,374	41,178,722	42,164,927	35,378,396	33,123,375
Aug	39,638,063	25,018,633	35,176,238	38,760,634	35,401,490	38,109,133
Sept	38,674,095	34,234,782	34,754,000	39,896,986	36,325,215	36,546,171
Oct	34,597,739	30,769,238	30,353,482	33,506,605	34,374,820	34,783,455
Nov	32,325,040	30,877,400	30,464,000	28,617,333	30,478,309	27,217,293
Dec	31,582,311	29,703,954	31,930,000	28,808,037	32,525,530	27,788,637
Jan	31,456,987	30,073,516	28,823,375	30,556,824	30,449,215	28,510,121
Feb	30,638,842	28,797,693	28,625,431	25,617,914	27,373,232	26,095,228
Mar	33,633,244	30,339,298	31,237,000	28,217,699	30,068,363	27,851,811
Apr	33,214,211	31,542,650	28,418,249	27,110,578	29,625,797	29,292,618
May	35,932,776	34,673,848	33,045,927	33,304,196	32,120,873	33,349,391
	-----	-----	-----	-----	-----	-----
Totals	403,344,751	363,233,689	388,046,424	396,493,135	395,662,561	373,759,772
Avg	1.10 MGD	.995 MGD	1.06 MGD	1.09 MGD	1.08 MGD	1.02 MGD



## 2.4 LAGOON DISCHARGE CONCENTRATIONS

The results for the NPDES lagoon discharge permit are summarized below.

Table 2.4 Weekly Grab Sample Analysis Results

Lagoon Effluent Results						
Date	Fe (mg/l)	Mn (mg/l)	Chloride (mg/l)	Cl <sup>2</sup> (mg/l)	pH (S.U.)	TSS (mg/l)
May 5th, 2021						
Minimum	.1	.171	550	.04	7.8	<4
Maximum	.1	.171	550	.04	7.8	< 4
Average	.1	.171	550			<4
<b>Monthly Avg Limit</b>	<b>2.000</b>	<b>1.000</b>				<b>15</b>
<b>Daily Limit</b>	<b>4.000</b>	<b>2.000</b>	<b>500</b>	<b>0.05</b>	<b>6.0-9.0</b>	<b>30</b>

The Chloride sample for the month, performed by the Springfield Metropolitan Sanitary District, was below 30,000 mg/l for the month of May 2021. The limit for chloride discharge to the sanitary district is 30,000 mg/L.

## 3. OPERATIONS

### 3.1 EVENTS IMPACTING OPERATIONS

There was 0 incident that impacted the operation of the plant.

### 3.2 EMERGENCY & SERVICE CALLS

#### Service Calls:

- There was 0 emergency call out for the month.

### 3.3 EMERGENCY CALL-OUTS

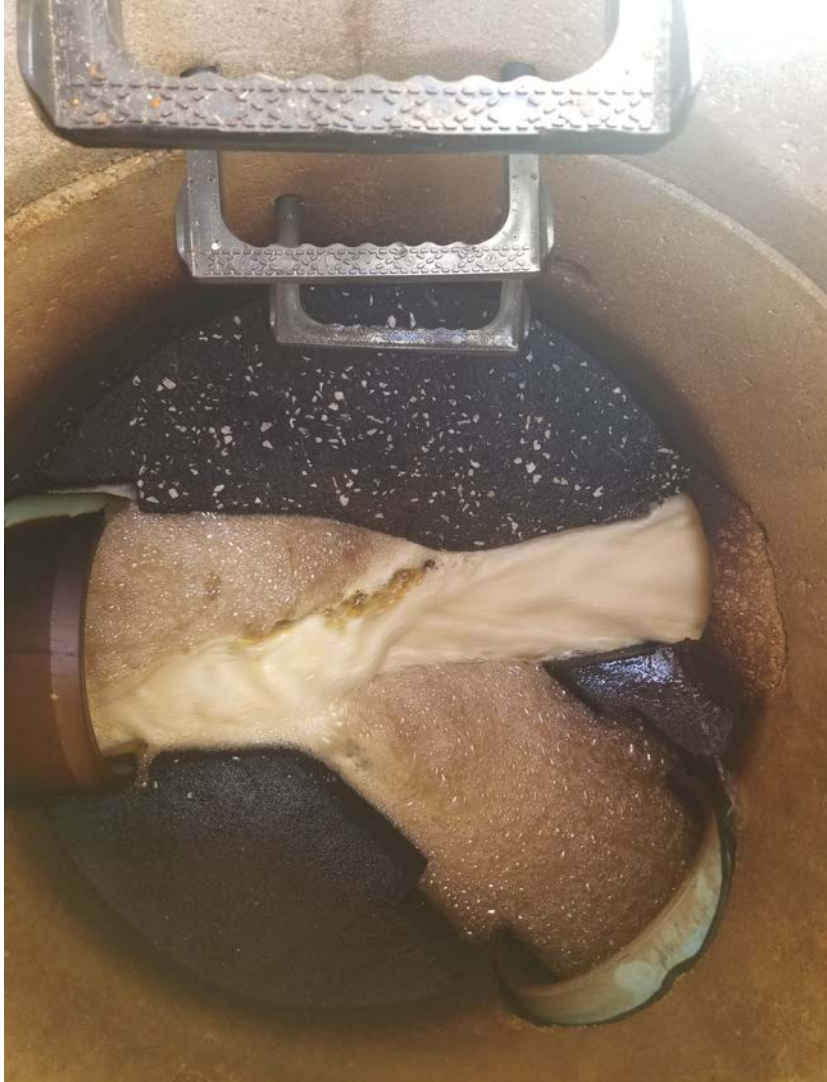
There was 4 emergency call out for the month of May

### 3.4 CUSTOMER INQUIRIE

There were numerous customer inquiries.

#### OTHER WORK PERFORMED

Trouble shooting all trains  
Trouble shooting of CIP skid and CIP procedure  
Inspected distribution mains  
Added to customer info database  
Inspected booster station  
Flushed air system  
Trouble shooting of Ion exchange system  
Replaced ion exchange valve actuator  
Performed acid clean on softener #2  
Replaced tank level relay on brine tank



Catch basin after the softener cleaning as we drain the citric acid.



The backwash influent pump basin as we backwashed softener #2

## 4. MAINTENANCE AND REPAIR

### 4.1 PREVENTATIVE AND PREDICTIVE MAINTENANCE

For the month of May 2021, there were 31 inspections, 3 preventative and 3 corrective maintenance activity completed.

### 4.2 CORRECTIVE REPAIR

Pulling and cleaning pre filters on all 3 filter trains on weekly basis

CIP train 1,2 and 3

Worked with SCADAware in learning our system.

Purged air control system

## 5. PROJECT MANAGEMENT & SUPPORT

### 5.1 STAFFING & TRAINING

- Staff member training has been continuous and ongoing.
- Operator and Asst. Operator have been studying for EPA licensing test.

### 5.2 OPERATIONAL SUPPORT

The following individuals, either on-site or remotely, provided assistance in operation and/or maintenance of the plant during the month of May 2021.

- Kevin Canham
- Stephen Bivin
- Katie Krall
- Kevin Garman (SCADAware)
- Dan (SCADAware)



## 5.3 BUDGET

Table 5.3 Operating Budget

Table 5.3 Budget Table

Budget Category	Month Budget	Month Actual	YTD Budget	YTD Actual	Annual Budget
Labor (D.L. + OH)	\$14,590.81	?	\$81,431	\$71,581	\$171,795
Utilities	\$8,30630		\$40,750	\$40,586	\$97,800
Chemicals	\$22,421.92		\$110,000	\$76,944	\$264,000
Maintenance & Repair	\$13,668.62		\$67,146	\$94,528	\$160,937
Chloride	\$12,979.73		\$65,800	\$61,400	\$157,920
Lab Supplies and Equipment	\$1,856.22		\$9,410	\$6,131	\$22,584
Office Supplies	\$213.04		\$1,080	\$264	\$2,592
Miscellaneous Expenses*	\$		\$	?	\$500
Other Operating Costs	\$	?	\$	\$6107	\$
Engineering Fees	\$2,547.95		<b>\$12,500</b>	<b>\$5,430</b>	\$30,000
Office Equipment rental	\$65		\$325	\$596	\$780
Locates	\$378.00	0	\$1,890	\$3,730	\$4536
Truck	\$3,287.67	0	\$6,667	\$131	\$40,000
<b>Total</b>	<b>\$80,315.26</b>	<b>\$</b>	<b>\$396,999</b>	<b>\$367,428</b>	<b>\$953,444</b>

\*as of September 21<sup>th</sup> 2020



## 6. CAPITAL PLANNING

### 6.1 APPROVED CIP PROJECTS CURRENT STATUS

New Berlin Meter master meter relocation project is commencing. Engineering and relocation plans have been finalized. Awaiting ground breaking.

Pigging project construction complete. Awaiting first pigging before completely releasing contractor.

BOP CPU replace is in the planning phase

Benton and Assoc has initiated the planning phase of the Chatham Emergency interconnect. Construction permit has been approved and received. Construction has been postponed.

### 6.2 DRAFT CAPITAL IMPROVEMENT PLAN

The CIP is a planning document that includes all projects anticipated to exceed \$5,000 in cost over the next five years. The CIP is an ongoing process and will be refined from time to time as projects are completed and new issues are identified.











