



# Monthly Operating Report

November:2025

So. Sangamon  
Water Commission  
December 15th, 2025

## SSWC

9199 Buckhart Rd Rochester IL 62563

# TABLE OF CONTENTS

SECTION	PAGE NO.
<b>Executive Summary.....</b>	<b>ES-1</b>
<b>1. SAFETY .....</b>	<b>1-1</b>
1.1 Safety Training .....	1-1
1.2 Lost time Accidents .....	1-1
1.3 Safety Audit .....	1-1
1.4 Miscellaneous Safety.....	1-1
<b>2. COMPLIANCE, FLOWS AND LOADINGS .....</b>	<b>2-2</b>
2.1 Compliance .....	2-2
2.2 Influent flows and loadings .....	2-2
2.3 Effluent Concentrations .....	2-2
2.4 Lagoon Discharge Concentrations .....	2-4
<b>3. OPERATIONS.....</b>	<b>3-1</b>
3.1 Events impacting operations .....	3-1
3.2 Emergency & Service calls .....	3-1
3.3 Emergency Call-outs .....	3-1
3.4 Customer Inquiries .....	3-1
<b>4. MAINTENANCE AND REPAIR.....</b>	<b>4-6</b>
4.1 Preventative and predictive maintenance.....	4-6
4.2 Corrective repairs .....	4-6
<b>5. PROJECT MANAGEMENT &amp; SUPPORT .....</b>	<b>5-1</b>
5.1 Staffing & Training.....	5-1
5.2 Corporate Support.....	5-2
5.3 Budget.....	5-3
<b>6. CAPITAL PLANNING .....</b>	<b>6-1</b>
6.1 Approved CIP Projects Current status.....	6-1
6.2 Draft Capital Improvement Plan .....	6-1



## LIST OF TABLES

<b>TABLE</b>	<b>PAGE NO.</b>
Table 2.2 Influent Concentrations and Flow.....	2-2
Table 2.3 Finished Water Quality.....	2-2
Table 2.4 Weekly Grab Sample Analysis Results.....	2-4
Table 4.1 Budget Table.....	5-3

## EXECUTIVE SUMMARY

**Safety.** Safety is the number one priority at South Sangamon. We have instituted a monthly safety meeting for operations staff at the plant. There were no lost time accidents in the month of November 2025.

**Compliance.** The finished water quality was within regulatory limits and all reporting and sampling requirements were met for the month. A copy of the Operations Report submitted to the Illinois Environmental Protection Agency is available at [www.sswc.us](http://www.sswc.us)

During the month of November 2025, the plant pumped 42.381 million gallons from the well field and 34.674 million gallons of finished water. This is 2.012 million gallons more than November 2024.

The SSWC plant has been removed from Critical Review status.

**Operations.** There was 0 emergency call-outs for the month. There were numerous customer inquiry for the month.

**Maintenance and Repair.** For the month of November 2025, there were 30 inspections, 3 preventative and multiple corrective maintenance activity completed. There were 3 repair activities performed.

**Budget.** Passed at March 17<sup>th</sup> 2025 meeting.

**Capital Planning.**

Detention Tank

Well #12

# 1. SAFETY

## 1.1 SAFETY TRAINING

At South Sangamon we strive to provide a safe working environment for all employees. This is accomplished with daily safety meetings and open communication.

## 1.2 LOST TIME ACCIDENTS

There were 0 lost time accidents in the month of November 2025.

## 1.3 SAFETY AUDIT

No safety audits to date.

## 1.4 MISCELLANEOUS SAFETY

No notable safety issues

## 2. COMPLIANCE, FLOWS AND LOADINGS

### 2.1 COMPLIANCE

The finished water quality was within regulatory limits and all Bacteriological testing was completed for the month of November. A copy of the Operations Report to the Illinois Environmental Protection Agency (IEPA) is available on the SSWC website.

### 2.2 INFLUENT FLOWS AND LOADINGS

The total gallons pumped from the well field were 42.381 MG. The influent parameters were all within the normal range.

The influent flow and loadings are summarized below in Table 2.2

<b>Table 2.2 Influent Concentrations and Flow</b>								
	pH	Temp	Iron	Manganese	Fluoride	Hardness	Alkalinity	Well Flow Gals (MGD).
<b>Max.</b>	7.5	15.3	1.43	.318	-	390	320	1.608
<b>Min.</b>	7.2	13.5	.05	.201	-	290	260	0.566
<b>Avg.</b>	7.35	14.7	.54	.263	-	375	286	1.413
<b>Total</b>	-	-	-	-	-	-	-	42.381

### 2.3 EFFLUENT CONCENTRATIONS

The facility filtered 37.082 MG during the month with a daily average of 1.236 MG and a min/max 1.436/.456 MG.

<b>Table 2.3 Finished Water Quality</b>										
	Free CL2	Total CL2	pH	Temp	Iron	Manganese	Fluoride	Hardness	Alkalinity	Phosphate
<b>Max.</b>	0.14	3.86	7.8		0.01	0.058	0.95	280	300	2.60
<b>Min.</b>	0.07	2.82	7.6		0.01	0.006	0.46	40	240	1.07
<b>Avg.</b>	0.10	3.31	7.71		0.01	0.025	0.79	180	278	2.13
<b>MCL</b>	-	-	-	-	1.00	-	4.00	-	-	-
<b>SMCL</b>	-	-	-	-	0.30	0.050	2.00	-	-	-

## Finished Water Flow Comparison for FY 2025

Time Period	2024-25	2023-24	2022-23
Dec 2024-Nov 2025	416,214,455	413,704,162	424,014,290
Increase for the same period last year		2.51 MG	-10.3 MG

FINISHED WATER PUMPING HISTORY						
	2024-25	2023 -24	2022-23	2021-22	2020-21	2019-20
Dec	32,675,158	31,818,986	30,450,255	31,391,459	31,582,311	29,703,954
Jan	33,741,476	33,807,516	37,721,005	32,322,270	31,456,987	30,073,516
Feb	29,167,378	29,777,768	33,481,076	32,451,653	30,638,842	28,797,693
Mar	31,913,792	31,222,925	36,781,261	33,909,417	33,633,244	30,339,298
Apr	31,328,823	31,707,537	36,832,617	31,991,050	33,214,211	31,542,650
May	36,216,393	36,629,959	43,484,155	37,459,417	35,932,776	34,673,848
June	36,297,369	40,285,085	22,455,176	38,496,145	37,616,256	17,414,377
July	33,897,659	38,944,142	41,565,811	38,861,790	39,001,640	44,237,066
Aug	43,119,702	38,576,284	39,770,720	36,977,913	39,953,900	39,638,063
Sept	37,181,554	37,258,390	38,677,420	32,355,302	38,935,839	38,674,095
Oct	37,837,812	34,907,003	32,733,224	29,576,287	34,918,955	34,597,739
Nov	32,837,339	28,768,567	30,061,570	35,563,717	31,181,005	32,325,040
	-----	-----	-----	-----	-----	-----
Totals	416,214,455	413,704,162	424,014,290	411,356,420	418,065,966	392,017,339
Avg	1.14 MGD	1.13 MGD	1.16 MGD	1.13 MGD	1.14 MGD	1.07 MGD

## 2.4 LAGOON DISCHARGE CONCENTRATIONS

The results for the NPDES lagoon discharge permit are summarized below.

**Table 2.4 Weekly Grab Sample Analysis Results**

<b>Lagoon Effluent Results</b>						
<b>Date</b>	<b>Fe (mg/l)</b>	<b>Mn (mg/l)</b>	<b>Chloride (mg/l)</b>	<b>Cl<sup>2</sup> (mg/l)</b>	<b>pH (S.U.)</b>	<b>TSS (mg/l)</b>
November 28 <sup>th</sup> , 2025						
Minimum	.05	.569	960	.0.03	7.5	<4
Maximum	.05	.569	960	.0.03	7.5	<4
Average	.05	.569	960	.0.03	7.5	<4
<b>Monthly Avg Limit</b>	<b>2.000</b>	<b>1.000</b>				<b>15</b>
<b>Daily Limit</b>	<b>4.000</b>	<b>2.000</b>	<b>500</b>	<b>0.05</b>	<b>6.0-9.0</b>	<b>30</b>

The Chloride sample for the month, performed by the Springfield Metropolitan Sanitary District, was below 30,000 mg/l for the month of November 2025. The limit for chloride discharge to the sanitary district is 30,000 mg/L. SSWC received a notice of violation for our discharge limits in October. Negotiations with the EPA to change our discharge limit for Chloride are underway.

## 3. OPERATIONS

### 3.1 EVENTS IMPACTING OPERATIONS

There were over 50 incident that impacted the operation of the plant.

Power surge

Power Sag

Power Outages

Ion Exchange Troubleshooting

Comm Loss Alarms

Well #8

BOP Communications with HMI

Comm Card Failure

SCADA #1 computer failure

### 3.2 EMERGENCY & SERVICE CALLS

#### Service Calls:

- There was 0 emergency call outs for the month.

### 3.3 EMERGENCY CALL-OUTS

There was 2 emergency call out for the month.

### 3.4 CUSTOMER INQUIRIE

There were numerous customer inquiries.

#### **OTHER WORK PERFORMED**

Inspected distribution mains

Inspected booster station

SCADA programming

Softener Repairs

Filter Train Repair

Lightning Strike Repair

Insurance Claim

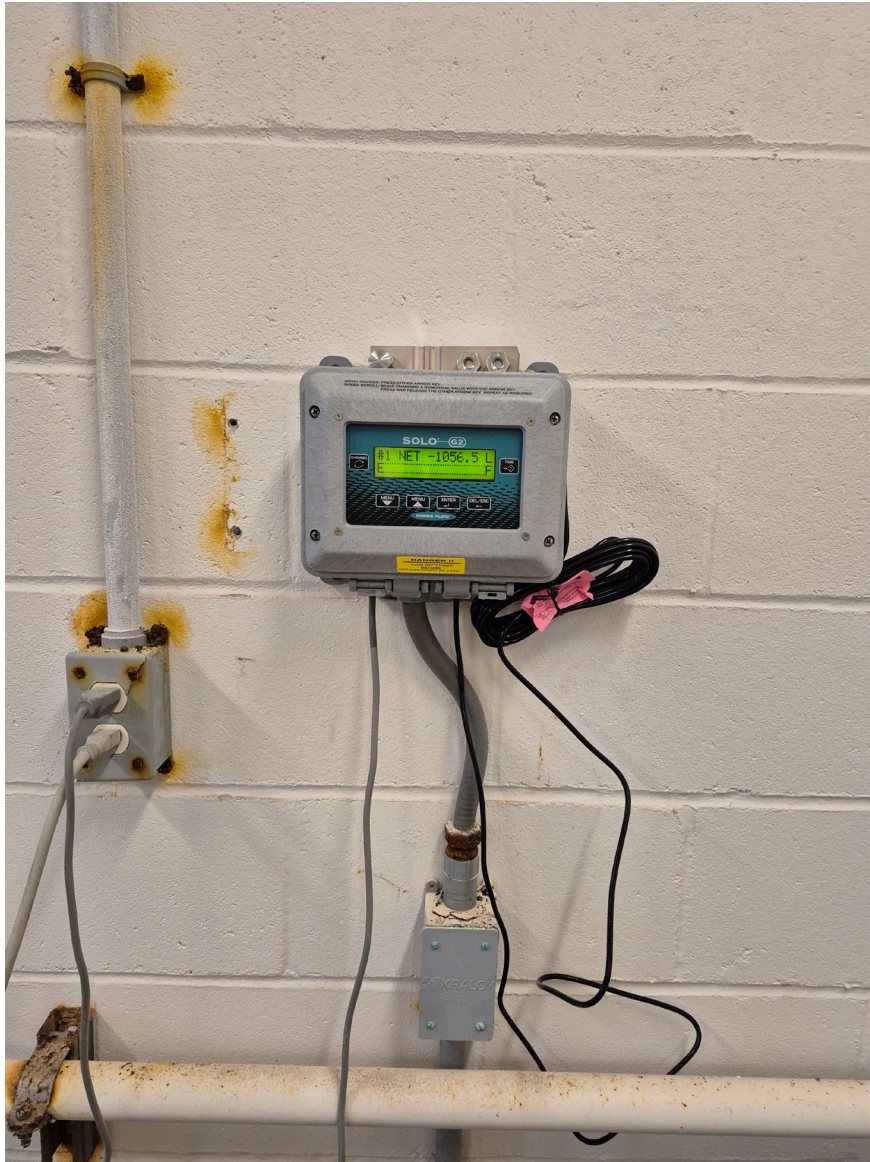
Scada repair



Staff noticed the Ammonia weights were off. It was found the scale had degraded to the point it no longer performed as it should.



Staff ordered a new scale for the Ammonium Sulfate. The floor beneath the scale itself has to be repaired as it also degraded enough it must be repaired before the scale is installed.



A new scale control panel was installed as well.



# Illinois Environmental Protection Agency

2520 West Iles Avenue • P.O. Box 19276 • Springfield • Illinois • 62794-9276 • (217) 782-3397

## Division of Public Water Supplies, Permit Section Application for Operating Permit

*This form may be completed online, a copy saved locally and printed before it is signed. You may also complete a printed copy manually. Submit the completed and signed form to the Illinois EPA, Division of Public Water Supplies, Permit Section at the address listed above.*

Facility Name: South Sangamon Water Commission Facility ID: IL1670080  
 Address 1: 9199 Buckhart Rd Construction Permit No.: 0252-FY2024  
 Address 2: NA Permit Type: WME & PI  
 City: Rochester State: IL Zip Code: 62563 Date Permit Issued: Dec 5, 2023  
 County: Sangamon  
 Project Title: Water Supply Well No. 11  
 Firm Name: MECO Engineering Company, Inc.

Project Status:  Final  
 Partial  
 Partial A, B, C, etc.

Application Requirements (check when complete):  
 Permit Number, Facility Number, and Facility Name identified on the Lab Report(s).  
 Sample results attached to the Application.  
 (If a new well was constructed, provide a copy of the sample results as required by Section II, Part g of the C-1 application).  
 For water main projects subject to Section 17.12 of the Act (415 ILCS 5/17.12), attach a statement on lead service lines and a copy of the lead informational notice (if one was distributed). See the instructions page for additional information.  
**If you select Partial, you must also submit the following items:**  
 Cover letter describing which sections were completed.  
 General project layout plans.  
 For water main projects, identify the length the Partial: \_\_\_\_\_ LF

Date of Project Completion: Feb 20, 2025 (Provide the date construction was completed on the project or partial)

Certified Operator in Responsible Charge:  
 Name: Stephen Blvin Classification: A Number: 253419999  
 Telephone: (217) 685-6210 Email (optional): sblvin@sswc.us

Owner of the Completed Project:  
 Name: Jim Roth Title: Chairman Telephone: (217) 381-5359  
 Address: 9199 Buckhart City: Rochester State: IL Zip Code: 62563

The Owner hereby certifies that the project named and described has been constructed in accordance with plans and specifications approved by the Illinois EPA. See instructions for further information. For Verbal Approvals, please call 217-782-1724.

Owner/Authorized Personnel Signature

7/29/25  
Date

*Any person who knowingly makes a false, fictitious, or fraudulent material statement, orally or in writing, to the Illinois EPA commits a Class 4 felony. A second or subsequent offense after conviction is a Class 3 felony. (415 ILCS 5/44(h))*

<b>FOR IEPA USE ONLY</b>		
This operating permit <u>0252-FY2024</u>	issued on <u>DEC 10 2025</u>	is valid until revoked.
This permit is valid only for the work completed under the Construction Permit of the same number.		
 Jaime Rabins, P.E. Unit A Working Supervisor, Permit Section Division of Public Water Supplies		

**RECEIVED**

AUG 08 2025

Div. of Public Water Supplies  
Illinois EPA

IL 532-0140  
PWS 037 Rev. 4/2025

Application for Operating Permit

The operating permit for well #11 was received. Well #11 is now in service.

## **4. MAINTENANCE AND REPAIR**

### **4.1 PREVENTATIVE AND PREDICTIVE MAINTENANCE**

For the month of November 2025, there were 30 inspections, 3 preventative and multiple corrective maintenance activities completed.

### **4.2 CORRECTIVE REPAIR AND MAINTENANCE**

Pulling and cleaning pre filters on all 3 filter trains on weekly basis

CIP train 1,2 and 3

Purged air control system

Raw water line flushing

Detention tank flush

Flushing Air Lines

Maintenance of New Berlin Booster Station

Air compressor Maintenance

Brine Solution Sampling

BOP Repair

SCADA Computer Repair



## 5. PROJECT MANAGEMENT & SUPPORT

### 5.1 STAFFING & TRAINING

- Staff member training has been continuous and ongoing.
- Operator and Asst. Operator have been studying for EPA licensing test.

### 5.2 OPERATIONAL SUPPORT

The following individuals, either on-site or remotely, provided assistance in operation and/or maintenance of the plant during the month of November 2025.

- Kevin Canham
- Stephen Bivin
- Katie Krall
- Dan (SCADAware)
- Joe Lee Electric
- Kevin Garmin (SCADAware)
- DELL Support
- Watts Copy



### **5.3 BUDGET**

Table 5.3 Operating Budget

#### **Table 5.3 Budget Table**

Budget Table was removed: see clerks report

## 6. CAPITAL PLANNING

### 6.1 APPROVED CIP PROJECTS CURRENT STATUS

Pigging project construction complete. First pig was scheduled. Issues were discovered. First pig was attempted but was not able to be performed.

The Chatham /South Sangamon emergency interconnect construction is complete. After many failed attempts; start has been completed.

Meter Project progressing, All meter bases and registers are on site. all cell meters have been installed.

Operating permit for well #11 was denied and resubmitted with requested materials.

SCADAware has completed the radio comms for well #11. Unable to test until we receive the operating permit.

### 6.2 DRAFT CAPITAL IMPROVEMENT PLAN

The CIP is a planning document that includes all projects anticipated to exceed \$5,000 in cost over the next five years. The CIP is an ongoing process and will be refined from time to time as projects are completed and new issues are identified.

1. Onsite fuel storage tanks have arrived on site and pumps have been installed-completed
2. BOP CPU upgrade-completed
3. Second raw water detention tank
4. SSWC/Chatham interconnect-completed
5. Well #11-construction complete
6. SCADA computer upgrade are complete
7. Well #12



South Sangamon Water Commission - IL 1670080  
 November 2025

Pumping Totals										Chemicals Applied										UF Filters										Softeners									
Time	Raw Well	Hours	Filer	UF	Plant	HS	Lagoon	Sodium Permanganate		Sodium Bisulfite BW		Sodium Hypochlorite		Ammonium Sulfate		Fluorosilicic Acid		Phosphate		Sodium Bisulfite Pond		Hours since previous backwash			Wash Water	Sofened Gal.	Water Bypassed Gal.	Regeneration											
								Am't Used	Calc Used	Am't Used	Calc Used	Am't Used	Calc Used	Am't Used	Calc Used	Am't Used	Calc Used	Am't Used	Calc Used	Am't Used	Calc Used	Am't Used	Calc Used	Am't Used					Calc Used	Am't Used	Calc Used	Bank #	1	2	3	4	Washed	Used	Gal.
1	7:00	18.2	1491	1354	0.003	1.221	0.060	52	0.84	0	0.00	482	5.34	3	0.05	37	0.69	8	0.26	0	0.00	0.66	0.66	0.66	0.66	0.70	0.855	0.469	46.0	4562	21700								
2	7:00	16.3	1312	1147	0.012	1.040	0.059	35	0.84	0	0.00	326	4.28	2	0.04	24	0.35	10	0.38	0	0.00	0.66	0.66	0.66	0.66	0.66	0.750	0.397	60.0	2281	10850								
3	7:00	19.4	1588	1364	0.004	1.334	0.083	48	0.73	0	0.00	428	4.70	3	0.05	36	0.61	7	0.21	0	0.00	0.66	0.66	0.66	0.66	0.66	0.892	0.472	87.0	62.0	42.0	6843	32550						
4	7:00	17.1	1441	1233	0.009	1.216	0.070	46	0.77	0	0.00	300	3.65	1	0.02	32	0.80	11	0.36	0	0.00	0.66	0.66	0.66	0.66	0.66	0.806	0.427	33.0	34.0	27.0	6843	32550						
5	7:00	18.4	1514	1330	0.010	1.182	0.082	59	0.83	0	0.00	452	5.08	6	0.11	34	0.88	14	0.47	0	0.00	0.66	0.66	0.66	0.66	0.66	0.869	0.461	52.0	36.0	28.0	6843	32550						
6	7:00	19.2	1570	1368	0.009	1.301	0.064	60	0.92	0	0.00	459	5.02	1	0.02	38	0.67	50	1.52	0	0.00	0.66	0.66	0.66	0.66	0.66	0.654	0.894	4.74	20.0	28.0	4562	21700						
7	7:00	20.4	1608	1379	0.009	1.311	0.079	55	0.82	0	0.00	442	4.80	5	0.09	33	0.57	10	0.30	0	0.00	0.66	0.66	0.66	0.66	0.66	0.74	0.901	0.478	61.0	22.0	28.0	4562	21700					
8	7:00	17.9	1527	1327	0.003	1.216	0.066	71	1.12	0	0.00	342	3.88	2	0.04	25	0.47	5	0.16	0	0.00	0.66	0.66	0.66	0.66	0.66	0.72	0.867	0.480	34.0	43.0	28.0	6843	32550					
9	7:00	17.1	1420	1225	0.009	1.187	0.066	22	0.37	0	0.00	434	5.31	3	0.06	33	0.63	6	0.20	0	0.00	0.66	0.66	0.66	0.66	0.66	0.66	0.801	0.424	35.0	36.0	4562	21700						
10	7:00	17.0	1429	1239	0.006	1.198	0.077	54	0.91	0	0.00	452	5.47	0	0.00	36	0.88	8	0.26	0	0.00	0.66	0.66	0.66	0.66	0.66	0.67	0.810	0.429	36.0	110.0	4562	21700						
11	7:00	18.5	1548	1436	0.006	1.205	0.091	57	0.88	0	0.00	492	5.14	2	0.03	40	0.76	8	0.26	0	0.00	0.66	0.66	0.66	0.66	0.66	0.72	0.939	0.497	27.0	44.0	48.0	9124	43400					
12	7:00	18.0	1387	1139	0.013	1.161	0.068	45	0.78	0	0.00	396	5.21	4	0.08	31	0.61	6	0.20	0	0.00	0.66	0.66	0.66	0.66	0.66	0.66	0.744	0.395	35.0	22.0	28.0	2281	10850					
13	7:00	17.4	1484	1274	0.005	1.233	0.068	43	0.69	0	0.00	374	4.40	2	0.04	29	0.54	6	0.19	0	0.00	0.66	0.66	0.66	0.66	0.66	0.66	0.66	0.778	0.413	39.0	35.0	4562	21700					
14	7:00	16.5	1369	1200	0.008	1.107	0.078	42	0.74	0	0.00	378	4.72	4	0.08	31	0.64	9	0.32	0	0.00	0.66	0.66	0.66	0.66	0.66	0.66	0.659	0.784	4.16	40.0	33.0	36.0	9124	43400				
15	7:00	16.8	1365	1314	0.009	1.119	0.080	46	0.81	0	0.00	428	4.88	4	0.07	33	0.67	13	0.46	0	0.00	0.66	0.66	0.66	0.66	0.66	0.66	0.66	0.66	0.66	37.0	30.0	4562	21700					
16	7:00	16.9	1390	1191	0.007	1.230	0.061	47	0.81	0	0.00	425	5.69	2	0.04	35	0.65	17	0.55	0	0.00	0.66	0.66	0.66	0.66	0.66	0.66	0.66	0.66	0.66	26.0	4562	21700						
17	7:00	16.8	1574	1345	0.006	1.268	0.086	35	0.53	0	0.00	450	5.01	-1	-0.02	37	0.66	64	2.00	0	0.00	0.66	0.66	0.66	0.66	0.66	0.66	0.66	0.66	32.0	53.0	6843	32550						
18	7:00	16.5	1531	1333	0.011	1.223	0.089	45	0.70	0	0.00	326	3.87	5	0.09	29	0.47	64	2.07	0	0.00	0.66	0.66	0.66	0.66	0.66	0.66	0.66	0.66	0.66	41.0	38.0	4562	21700					
19	7:00	17.3	1454	1249	0.006	1.245	0.081	47	0.78	0	0.00	336	4.30	3	0.06	29	0.53	80	2.54	0	0.00	0.66	0.66	0.66	0.66	0.66	0.66	0.66	0.66	0.66	40.0	41.0	31.0	6843	32550				
20	7:00	15.2	1251	1106	0.009	0.972	0.064	52	1.00	0	0.00	390	5.28	1	0.02	31	0.73	21	0.85	0	0.00	0.66	0.66	0.66	0.66	0.66	0.66	0.66	0.66	0.66	34.0	38.0	5843	32550					
21	7:00	16.4	1314	1242	0.011	1.062	0.069	51	0.93	0	0.00	392	4.73	4	0.08	30	0.64	7	0.26	0	0.00	0.66	0.66	0.66	0.66	0.66	0.66	0.66	0.66	0.66	34.0	29.0	4562	21700					
22	7:00	17.1	1388	1197	0.006	1.119	0.072	38	0.66	0	0.00	294	3.68	8	0.16	23	0.47	5	0.18	0	0.00	0.66	0.66	0.66	0.66	0.66	0.66	0.66	0.66	0.66	49.0	35.0	4562	21700					
23	7:00	16.6	1324	1070	0.010	1.167	0.051	52	0.94	0	0.00	424	5.94	0	0.00	34	0.86	8	0.27	0	0.00	0.66	0.66	0.66	0.66	0.66	0.66	0.66	0.66	0.66	0.66	0.66	0.66	0.66	0.66	0.66			
24	7:00	17.3	1390	1198	0.011	1.155	0.081	52	0.90	0	0.00	430	5.38	0	0.00	35	0.69	9	0.31	0	0.00	0.66	0.66	0.66	0.66	0.66	0.66	0.66	0.66	0.66	62.0	88.0	6843	32550					
25	7:00	16.7	1581	1374	0.010	1.265	0.061	58	0.89	0	0.00	492	5.37	0	0.00	38	0.88	20	0.63	0	0.00	0.66	0.66	0.66	0.66	0.66	0.66	0.66	0.66	0.66	0.66	0.66	0.66	0.66	0.66				
26	7:00	17.7	1525	1314	0.000	1.196	0.082	40	0.63	0	0.00	338	3.86	0	0.00	28	0.53	2	0.07	0	0.00	0.66	0.66	0.66	0.66	0.66	0.66	0.66	0.66	0.66	38.0	51.0	45.0	6843	32550				
27	7:00	15.7	1277	1123	0.010	1.069	0.070	36	0.68	0	0.00	314	4.19	-1	-0.02	23	0.49	9	0.33	0	0.00	0.66	0.66	0.66	0.66	0.66	0.66	0.66	0.66	0.66	34.0	136.0	32.0	6843	32550				
28	7:00	17.6	1463	1317	0.012	1.205	0.089	52	0.84	0	0.00	478	5.44	1	0.02	37	0.70	39	1.28	0	0.00	0.66	0.66	0.66	0.66	0.66	0.66	0.66	0.66	0.66	35.0	22.0	2281	10850					
29	7:00	15.6	1320	1238	0.003	1.029	0.060	25	0.45	0	0.00	224	2.71	0	0.00	18	0.40	18	0.69	0	0.00	0.66	0.66	0.66	0.66	0.66	0.66	0.66	0.66	0.66	0.66	0.66	0.66	0.66	0.66				
30	7:00	13.5	9586	9456	0.002	0.438	0.034	11	0.47	0	0.00	508	16.70	0	0.00	22	1.14	114	10.30	0	0.00	0.66	0.66	0.66	0.66	0.66	0.66	0.66	0.66	0.66	54.0	46.0	54.0	58.0	9124	43400			
31																																							
<b>Total</b>																																							
<b>Ave.</b>																																							
<b>Max</b>																																							
<b>Min</b>																																							

FLUORINATION		CHLORINATION	
1	20% Sodium Permanganate	Post-aerator	
2	40% Bisulfite Solution	Membrane Backwash	
3	12.5% Sodium Hypochlorite Solution	Post-Solifier	
4	20% Ammonium Sulfate Solution	Post-Cleanwell	
5	19% Fluorosilicic Acid Solution	Post-Cleanwell	
6	33% Phosphate Solution	Post-Cleanwell</	

